

Application Tracking of Underrepresented groups.

Indian Constitution 124th Amendment Bill, 2019 provides ten per cent reservation to the economically weaker sections (EWS) in the General category. The bill facilitates reservation for EWS in direct recruitments in jobs and admission in higher educational institutions.

Similarly, based on the community, Schedule Caste, Schedule Tribe and Other Backward Castes also considered as underrepresented groups.

Still today, women also facing the problem of underrepresentation in many walks of life.

As a Higher Educational Institution, committed for the cause of sustainable development, GITAM always strives to contribute for the cause. In its admissions, it will monitor, track and try to reach the target of admitting students from Economically Weaker sections, Scheduled Caste (SC), Scheduled Tribe (ST), Other Backward Caste (OBC) and women.

When it comes to the Bottom 20% of the Low-Income households in OBC, SC, ST category also some students fall into Below Poverty Line (BPL) family category.

The Financial Assistance requirement of the students also considered while offering admission.

GITAM Admissions Process

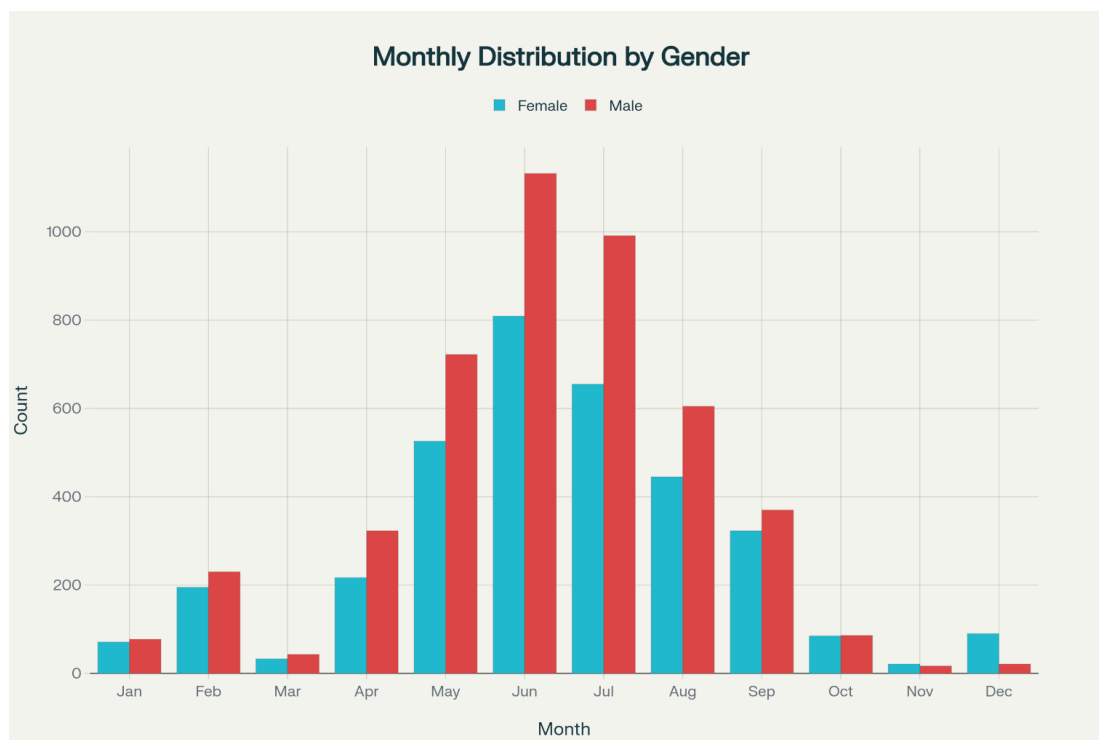
GITAM has a well-defined admissions policy where the process for admissions for the new academic year, the admissions committee headed by the admissions chairperson periodically conducts review meetings and monitors the application rate, entry rate, withdrawal rate of these underrepresented groups.

The online application process is well in place : <https://apply.gitam.edu/>

Month-wise admission data by gender classification:

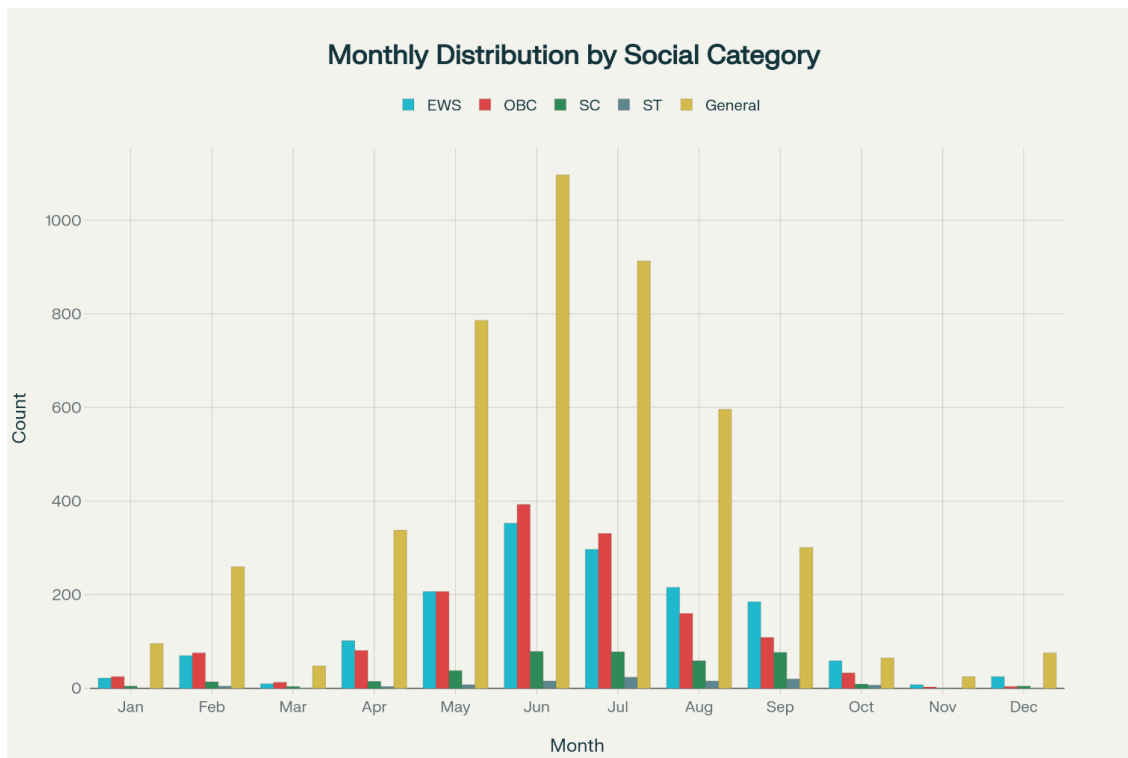
Month	Female	Male
January	71	77
February	195	230
March	33	43
April	217	323
May	526	722
June	809	1132
July	655	991
August	445	605

September	323	370
October	85	86
November	21	17
December	90	21



Month-wise admission data by social and economic status classification:

Month	EWS	Other Backward Caste(OBC)	Scheduled Caste (SC)	Scheduled Tribe (ST)	General
January	22	25	5		96
February	70	76	14	5	260
March	10	13	4	1	48
April	102	81	15	4	338
May	207	207	38	8	786
June	353	393	79	16	1097
July	297	331	78	24	913
August	216	160	59	16	596
September	185	109	77	20	301
October	59	33	9	7	65
November	8	3	1		25
December	25	4	5	1	76



Month-wise admission data by Financial Assistance requirement classification:

Month	Financial Assistance
January	24
February	43
March	9
April	35
May	88
June	148
July	113
August	95
September	51
October	7
November	6
December	1

In the Academic Year 2023-24, Total number of students admitted are 7786 and the financial assistance is provided to 620 i.e., 7.96 % belongs to low-income households who are supported with financial assistance.